





cover : Tim Watson (Australia)
left : Mathieu Dubourgnon (France)

TECHNIQUE INNOVATION SIMPLICITY

Our three friends.
They stayed in our minds when we created
the 2011 Superstar range.

- .03 WATSON Frame
- .04 CARLTON Frame
- .05 COOPER Frame
- .06 Frames Comparator
- .07 Neutral Fork, Sweet Sweep Handlebar
- .08 F9 & Edge9 Stems, Stem Bolts
- .09 Trip & Pimp Sprockets
- .10 Overdrive Front & Rear Hubs
- .11 Front & Rear Duty Wheels
- .12 Duty Rim, Easy seat
- .13 Plastic, Nylon & UV Pedals
- .14 Hub Bolts, Micropegs, Headset, Spanish BB set
- .13 Warranty & Distributors

2011 WATSON Frame

Trails-oriented son of our famous discontinued New Deal frame. Yes, a trails frame again at Superstar !



100 % Sanko cr-mo tubing
top tube : 20.6", 21.0" or 21.3"
chainstays : 13.75"
head angle : 74.5°
seat angle : 71°
BB height : 11.6"
weight : 2.20 kg / 4.85 lbs

trails oriented geometry, with longer seat tube (1 cm higher frame)
stronger tubes than 2010 frames
bulged seat stays near seat tube
tapered seat stays near dropouts, round tips
19 mm D-shape chain stays (dent free)
7 mm investment cast hollow dropouts, for 14 mm axle
integrated chain tensioners through dropouts
Campagnolo-style internal head tube (heat treated)
Spanish bottom bracket (heat treated)
completely removable brake/gyro parts
internal seat clamp in top tube, Strawberry patent
new engraved logo on head tube

2011 COLORS : ED-black, pearl silver, matt dark army
painted frames are ED-blackened before painting : no corrosion inside tubes

ECOLOGICAL SPECS :

black color is ED (electro deposit) : less chemical than powder coating
minimal sticker kit, 2 identical grip stickers on our 3 frames : less waste
no sticker on head tube, engraved logo only : no waste
removable brake parts = no more brake/brakeless versions

2011 CARLTON Frame

Street-oriented son of our famous discontinued New Deal frame.



100 % Sanko cr-mo tubing
top tube : 20.6", 21.0" or 21.3"
chainstays : 13.4"
head angle : 75°
seat angle : 70°
BB height : 11.6"
weight : 2.20 kg / 4.85 lbs

stronger tubes than 2010 frames
gusset under top tube
bulged seat stays near seat tube
tapered seat stays near dropouts, round tips
19 mm D-shape chain stays (dent free)
7 mm investment cast hollow dropouts, for 14 mm axle
integrated chain tensioners through dropouts
Campagnolo-style internal head tube (heat treated)
Spanish bottom bracket (heat treated)
completely removable brake/gyro parts
internal seat clamp in top tube, Strawberry patent
new engraved logo on head tube

2011 COLORS : ED-black, pearl coffee, malt toffee
Painted frames are ED-blacked before painting : no corrosion inside tubes

ECOLOGICAL SPECS :
black color is ED (electro deposit) : less chemical than powder coating
minimal sticker kit, 2 identical grip stickers on our 3 frames : less waste
no sticker on head tube, engraved logo only : no waste
removable brake parts = no more brake/brakeless versions

2011 COOPER Frame

Modern all around street frame, pegs compatible. Fully revised for 2011.

NEW FOR 2011

- thicker top tube
- gusset under down tube
- bulged + tapered seat stays
- investment cast hollow dropouts



100 % Sanko cr-mo tubing
top tube : 20.6", 21.0" or 21.3"
chainstays : 13.2"
head angle : 75°
seat angle : 70°
BB height : 11.6"
weight : 2.20 kg / 4.85 lbs

upgraded overall strength
gusset under top tube
bulged seat stays near seat tube
tapered seat stays near dropouts, round tips
19 mm D-shape chain stays (dent free)
7 mm investment cast hollow dropouts, peg-sized, for 14 mm axle
integrated chain tensioners through dropouts
Campagnolo-style internal head tube (heat treated)
Spanish bottom bracket (heat treated)
completely removable brake/gyro parts
low weld-on seat clamp with replaceable bolt and nut

2011 COLORS : ED-black, dark purple, malt dark grey
Painted frames are ED-blackened before painting : no corrosion inside tubes

ECOLOGICAL SPECS :
black color is ED (electro deposit) : less chemical than powder coating
minimal sticker kit, 2 identical grip stickers on our 3 frames : less waste
no sticker on head tube, engraved logo only : no waste
removable brake parts = no more brake/brakeless versions

2011 Frames Comparator

Cooper

Carlton

Watson

GEOMETRY

Top tube	20.6"	21"	21.3"	20.6"	21"	21.3"	20.6"	21"	21.3"
Head angle	75°	75°	75°	75°	75°	75°	74.5°	74.5°	74.5°
Seat angle	70°	70°	70°	70°	70°	70°	71°	71°	71°
Rear triangle	13.2"	13.2"	13.2"	13.4"	13.4"	13.4"	13.75"	13.75"	13.75"
BB height	11.6"	11.6"	11.6"	11.6"	11.6"	11.6"	11.6"	11.6"	11.6"
Seat tube height	9.1"/232 mm	9.1"/232 mm	9.1"/232 mm	9"/230 mm	9"/230 mm	9"/230 mm	9.4"/240 mm	9.4"/240 mm	9.4"/240 mm

SPECS

Average weight	4.85 lbs/2.20 kg	4.85 lbs/2.20 kg	4.85 lbs/2.20 kg	4.85 lbs/2.20 kg	4.85 lbs/2.20 kg	4.85 lbs/2.20 kg	4.85 lbs/2.20 kg	4.85 lbs/2.20 kg	4.85 lbs/2.20 kg
Headset standard	Campagnolo 45°/45° - 41.8 mm	Campagnolo 45°/45° - 41.8 mm	Campagnolo 45°/45° - 41.8 mm	Campagnolo 45°/45° - 41.8 mm	Campagnolo 45°/45° - 41.8 mm	Campagnolo 45°/45° - 41.8 mm	Campagnolo 45°/45° - 41.8 mm	Campagnolo 45°/45° - 41.8 mm	Campagnolo 45°/45° - 41.8 mm
Gusset under down tube	Yes	Yes	Yes	Yes	Yes	Yes	No	No	No
BB shell	Spanish O.D. 37 mm bearings	Spanish O.D. 37 mm bearings	Spanish O.D. 37 mm bearings	Spanish O.D. 37 mm bearings	Spanish O.D. 37 mm bearings	Spanish O.D. 37 mm bearings	Spanish O.D. 37 mm bearings	Spanish O.D. 37 mm bearings	Spanish O.D. 37 mm bearings
Bulged + tapered seatstays	Yes	Yes	Yes	Yes	Yes	Yes	Yes	Yes	Yes
D-shape chainstays	Of course	Of course	Of course	Of course	Of course	Of course	Of course	Of course	Of course
Chain tensioners	through dropouts	through dropouts	through dropouts	through dropouts	through dropouts	through dropouts	through dropouts	through dropouts	through dropouts
Gyro tabs holes	Yes	Yes	Yes	Yes	Yes	Yes	Yes	Yes	Yes
Brake stuff	All removable	All removable	All removable	All removable	All removable	All removable	All removable	All removable	All removable
Seat clamp	Integrated, with replaceable nut	Integrated, with replaceable nut	Integrated, with replaceable nut	Strawberry® internal	Strawberry® internal	Strawberry® internal	Strawberry® internal	Strawberry® internal	Strawberry® internal
Dropouts	Medium, 7 mm hollow, for 14 mm axle	Medium, 7 mm hollow, for 14 mm axle	Medium, 7 mm hollow, for 14 mm axle	Small, 7 mm hollow, for 14 mm axle	Small, 7 mm hollow, for 14 mm axle	Small, 7 mm hollow, for 14 mm axle	Small, 7 mm hollow, for 14 mm axle	Small, 7 mm hollow, for 14 mm axle	Small, 7 mm hollow, for 14 mm axle

RECOMMENDATIONS

Pegs use	Yes	Yes	Yes	Best with Micropegs	Best with Micropegs	Best with Micropegs	Best with Micropegs	Best with Micropegs	Best with Micropegs
Minimum seat post length	35 mm - 1.4"	35 mm - 1.4"	35 mm - 1.4"	50 mm - 2"	50 mm - 2"	50 mm - 2"	50 mm - 2"	50 mm - 2"	50 mm - 2"
Dual lower cable	No	No	No	No	No	No	No	No	No



Neutral Fork

100 % heat treated Cr-Mo

1 pc CNC + butted + fluted head tube, 165 mm long
integrated crown cone for integrated headset only
triple butted + fluted + taper 31.8 mm to 22 mm legs
small 4 mm dropouts, for 3/8" axle
25 mm reach

M25 top cap (18 grams / 0.6 lb), available separately
weight : 890 grams / 1.95 lbs

2011 colors : ED-black, pearl coffee, pearl silver, matt dark grey, matt dark army
painted forks are ED-blacked before painting : no corrosion inside tubes

SweetSweep Handlebars

3 sizes : 8.0", 28.5" wide / 8.3", 29" wide / 8.6", 29" wide

100 % heat treated multibutted Cr-Mo

19 mm crossbar / 13° backsweep / 2° upsweep

4 saw lines each side for a clean cut

engraved size on one side

weight : 730 grams / 26 oz

2011 colors : ED-black, pearl coffee, pearl silver, matt dark grey, matt dark army



F9 Stem

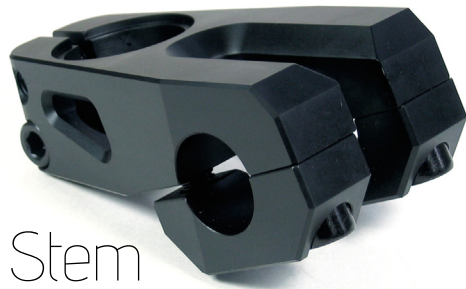
New for 2011 : front load version of the Edge9

6061-T6 alloy
49 mm or 53 mm extension
dissymetrical bar clamps for smooth top surface
fork cap hole for hidden cap from sideview
4 hollow bolts
weight : 266 grams / 9.5 oz
2011 colors : black, red, blue



Edge9 Stem

wider and stronger clamps
6061-T6 alloy
49 mm extension
dissymetrical bar clamps for smooth front surface
fork cap hole for hidden cap from sideview
4 hollow bolts
weight : 278 grams / 9.9 oz
2011 colors : black, red, blue



Stem Bolts

M8 x 25 mm
compatible with most of the stems on the market
4 bolt pack
weight : 11 grams / 0.4 oz each



Trip Sprocket

New 3-spokes light sprocket

7075-T6 alloy

15/16" hole + 19 mm and 22 mm adaptors

23T = 5.0 mm thick (4 mm in the center), 33 grams / 1.2 oz

25T = 5.0 mm thick (4 mm in the center), 39 grams / 1.4 oz

2011 colors : black, red, blue

Pimp Sprocket

7075-T6 alloy

15/16" hole + 19 mm and 22 mm adaptors

23T = 5.0 mm thick, 43 grams / 1.5 oz

25T = 6.8 mm thick, 56 grams / 1.9 oz

28T = 8.6 mm thick, 84 grams / 2.9 oz

New 36T = 6.35 mm thick, 132 grams / 4.7 oz

2011 colors : black, red, blue





Overdrive Cassette Hub

street proof hub, peqs compatible

36 holes
3/8" and 14 mm dropouts compatible
heat treated Cr-Mo female axle
6061-T6 alloy bi-conic body
Q-Lai driver system : 6 pawls + 6 v-springs
1 pc Cr-Mo driver, right only, 8T or 9T
7075-T6 alloy cones and washers
3/8" x 24 tpi CNC hex bolts
normal bolts available as spare parts
spoke length with Duty rim : 181/183 mm
weight : 445 grams / 15.9 oz
2011 colors : black, red, blue



Overdrive Front Hub

street proof hub, peqs compatible

36 holes
heat treated Cr-Mo female axle
6061-T6 alloy bi-conic body with die-cut star logo
thick flanges
7075-T6 alloy cones and washers
3/8" x 24 tpi bolts
all replacement hardware available
17 mm hex bolts available as spare parts
ultra light 7075-T6 alloy axle available (save 45 grams / 1.6 oz)
spoke length with Duty rim : 184 mm
weight : 245 grams / 8.7 oz including Cr-Mo bolts
2011 colors : black, red, blue



Duty Front Wheel

lightweight brakeless front wheel

Superstar Duty rim + Superstar Overdrive front hub

36 strong stainless steel spokes, 3 cross

spoke length : 184 mm

weight : 920 grams / 2.03 lbs

2011 colors : all black

Duty Rear Wheel

lightweight brakeless rear wheel, however brake works fine on it

Superstar Duty rim + Superstar Overdrive cassette hub, 8T or 9T

36 strong stainless steel spokes, 3 cross

spoke length : 181/183 mm

weight : 1079 grams / 2.38 lbs

2011 colors : black, red, blue





Duty Rim

brakeless rim, with sidewall high enough to use brake on it

36 holes

Superstar white nylon rim tape included (also available separately)

spoke length with Overdrive front hub : 184 mm

spoke length with Overdrive cassette hub : 181/183 mm

484 grams / 17.3 oz

2011 colors : black, grey



Easy Seat

1-pc seat/seatpost combo
simple uncovered plastic saddle
14 cm / 5.5" seatpost length
weight : 168 grams / 6.0 oz
2011 colors : black, red, blue



PC Pedals

new square shape
clear/translucent PC body
9/16" cr-mo axle
axle cap with Superstar logo
weight : 353 grams / 12.6 oz
2011 colors : black, clear, red, green

Pedals PC with removable pins
standard square shape
clear/translucent PC body
removable steel pins
9/16" cr-mo axle
axle cap with Superstar logo
poids : 398 grams / 14.2 oz
2011 colors : black, clear, red

Nylon Pedals

new square shape
high resistant nylon body
9/16" cr-mo axle
axle cap with Superstar logo
weight : 382 grams / 13.6 oz
2011 colors : black, red, blue, green, purple

UV Pedals

new square shape
UV body : color changes under the sun
9/16" cr-mo axle
axle cap with Superstar logo
weight : 305 grams / 10.9 oz
2011 colors : blue-to-purple, yellow-to-brown,
white-to-pink, white-to-purple



Headset

ultra low stack cap : 4 mm lower than the average cap
Compagnolo compatible
weight : 58 grams / 2.1 oz
2011 colors : black, red, blue

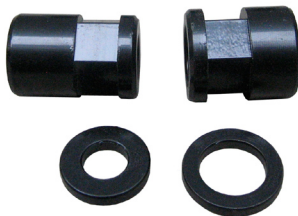


Hub Bolts

Normal axle bolt
for female hub
3/8" x 24 tpi, 30 mm long
cr-mo
for 8 mm Allen key
includes alloy cap
sold as 2 pieces



CNC hex axle bolt
for female hub, for peg use (easier to tight)
3/8" x 24 tpi, 30 mm long
CNC from cr-mo material, for great strength
for 17 mm socket wrench
sold as 2 pieces



Micro Pegs

Original Micropeg
For pegless use, protects axle + can be used as small peg
2 sizes : 3/8" axle and 14 mm axle
heat treated cr-mo
weight 3/8" mm : 52 grams / 1.8 oz
weight 14 mm : 36 grams / 1.3 oz
sold as 1 piece



Female Micropeg
Same functions as the Original, for female hub
2 sizes : for 3/8" slot and 14 mm slot
heat treated cr-mo
includes a 3/8" x 24 tpi Allen bolt
weight 3/8" mm : 46 grams / 1.6 oz
weight 14 mm : 49 grams / 1.7 oz
sold as 1 piece



Spanish BB Set

2 sizes : 19 mm axle and 22 mm axle
with spacer, cones and washers
weights :
138 grams / 4.9 oz (19 mm)
119 grams / 4.2 oz (22 mm)
2010 color : black



Distributors

AUSTRIA

La Finca (Germany)
www.la-finca-distribution.de
info@la-finca-distribution.de

AUSTRALIA (+ NEW ZEALAND)

Kickassbmx
www.kickassbmx.com
bmx@kickassbmx.com

BELARUS

BMX.B4 Shop
www.bmx-shop.by / www.bmx.by
info@bmx.by

BELGIUM + LUXEMBOURG

Frenchys Distribution
www.frenchys-distribution.com
infos@frenchys-distribution.com
SC distribution
www.scdistribution.nl
info@scdistribution.nl

CANADA

Unicorn Bicycle Distribution
unicornbikes@hotmail.com

CENTRAL EUROPE

Gorb-X / Harlee
www.harlee-shop.com
online@harlee-shop.com

CHINA

China BMX
www.chinabmx.com

COLOMBIA

Free Culture Shop
www.freecultureshop.com
info@freecultureshop.com

CZECH REPUBLIC

Cykloferda
www.cykloferda.cz
cykloferda@seznam.cz

DENMARK

Signature BMX (Finland)
www.signaturebmx.com
info@signaturebmx.com

ESTONIA

Signature BMX (Finland)
www.signaturebmx.com
info@signaturebmx.com

FINLAND

Signature BMX (Finland)
www.signaturebmx.com
info@signaturebmx.com

FRANCE

Frenchys Distribution
www.frenchys-distribution.com
infos@frenchys-distribution.com

GERMANY

(+ AUSTRIA & SWITZERLAND)
La Finca
www.la-finca-distribution.de
info@la-finca-distribution.de

HONG KONG

Cavalier Distribution
cavalierdistribution@gmail.com

HUNGARY + CENTRAL EUROPE

Gorb-X / Harlee
www.harlee-shop.com
online@harlee-shop.com

ITALY

Frontocean BMX
www.frontocean.com
info@frontocean.com

JAPAN

Delirium Family
www.delirium-family.com
info@delirium-family.com

KOREA

4130Bike
www.4130.co.kr
lee@bmxkorea.com

LATVIA

Par BMX
www.parbmx.com
info@parbmx.com

MEXICO

Ortiz BMX
www.ortizbmx.com
ortizbmx@yahoo.com.mx

THE NETHERLANDS

SC distribution
www.scdistribution.nl
info@scdistribution.nl

NORWAY (+ SWEDEN)

Element
www.bmxelement.no
element@bmxelement.no

PHILIPPINES

Flip Bukses
www.flipbukses.com
info@flipbukses.com

POLAND

Proletaryat BMX
www.proletaryatbmx.pl
kuki@proletaryatbmx.pl

RUSSIA

Hellride
www.hellride.ru
info@hellride.ru

SINGAPORE

20 Inch Circle
www.20incho.com
sales@20incho.com

SPAIN

Action Wheels Distribution
RICARDO4130@telefonica.net

SWEDEN

Element (see Norway)
Signature BMX (see Finland)

SWITZERLAND

La Finca (Germany)
www.la-finca-distribution.de
info@la-finca-distribution.de

TAIWAN

Friendly Distribution
www.wretch.cc/blog/vickykatie

UNITED KINGDOM

Zeal BMX
www.zealbmx.com
info@zealbmx.com

USA

Sidewall Distribution
www.sidewalldistro.com

OTHERS COUNTRIES

Please contact us for
distribution solutions

Warranty

Contact us for any warranty issue at :

question@superstarbmx.com

We handle warranty issues case by case, with a happy ending, most of the time. However we might not replace all damaged frames or parts, because warranty does not cover normal wear and tear, misuse or neglect, or modification of the frame or part. Warranty applies only to the original owner and is not transferable. Superstar shall not be responsible for incidental or consequential damages.